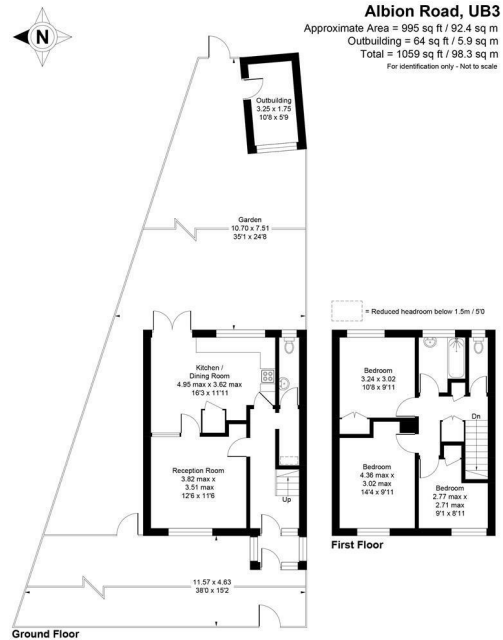


**£525,000**

**Albion Road**

Hayes, UB3 2SP





**Albion Road, UB3**  
 Approximate Area = 995 sq ft / 92.4 sq m  
 Outbuilding = 64 sq ft / 5.9 sq m  
 Total = 1059 sq ft / 98.3 sq m  
 For identification only - Not to scale

Floor plan produced in accordance with RICS Property Measurement Standards incorporating International Property Measurement Standards (IPMS2 Residential). ©Vizion Property Marketing 2026. Produced for Allday & Miller estate agents

3

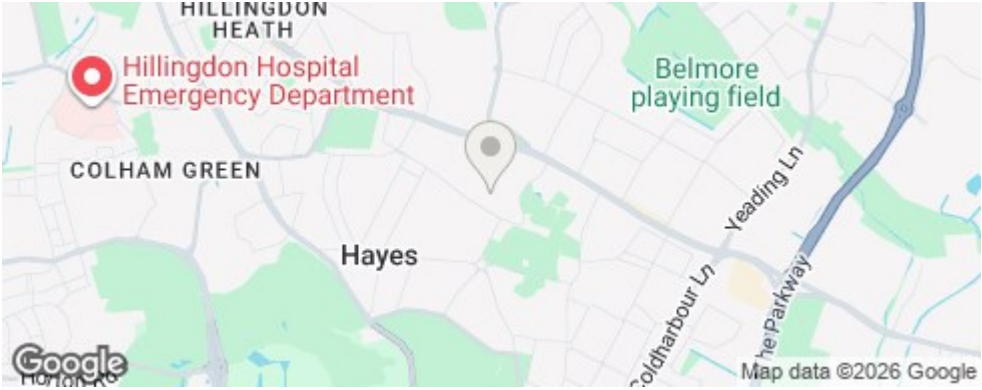
2

1



Energy Efficiency Rating		
	Current	Potential
Very energy efficient - lower running costs		
(92 plus) <b>A</b>		
(81-91) <b>B</b>		
(69-80) <b>C</b>		
(55-68) <b>D</b>		
(39-54) <b>E</b>		
(21-38) <b>F</b>		
(1-20) <b>G</b>		
Not energy efficient - higher running costs		
<b>England &amp; Wales</b>	70	79
	EU Directive 2002/91/EC	

Agents Note: Whilst every care has been taken to prepare these particulars, they are for guidance purposes only. All measurements are approximate and are for general guidance purposes only and whilst every care has been taken to ensure their accuracy, they should not be relied upon and potential buyers/tenants are advised to recheck the measurements



**Shaw & Co**  
ESTATE AGENTS

**OFFICE ADDRESS**  
 10 Central Parade  
 New Heston Road  
 Heston  
 Middlesex  
 TW5 0LH

**OFFICE DETAILS**  
 0208 570 7258  
 heston@shawandcoestates.com